

Important Wetlands in Manipur

Pumlen pat:



The Pat (lake) lies within 9400'-94015'E longitude and 24015' - 25030' N latitude, at an altitude of 770 m. above mean sea level (MSL). It is a freshwater lake lying in the Thoubal District. The major water body is surrounded on four sides by the villages namely Komjao Khong, Chingjao, Hiyanglam, Arong and Tera in the north, Kakching Khunou and Thongam in the south, Waitkong, Thongjao, Elangkhangpokpi and Langmeidong in the east and Sarik and Munushei (Munshoi) in the west. This lake lies to the far east of Keibul Lamjao National Park which is popularly known as "floating Island and home of SANGAI. Other important adjoining water bodies of this lake are Ungamel pat (western side), Khoidum pat (Northern side) and Moirangkhom pat (southern side). Ungamel pat lies to the western side of Arongnongmaikhong river which runs from the north to the south. This Ungamel pat remains connected to the Arongnongmaikhong river by man-made channels. Other main sources of water, supplying Pumlen pat are Khongjil river, running from the western to the eastern side, Hiranmei river (also known as Hiyanglam river) running from the north to the south of the lake.

The Thongkhong river lying at the extreme east of Tokching hill range and flowing from the north to the south drains water from this lake. This river after running for a short distance pours its water into the Ithai river. The Tokching is a narrow range of low hills extending from the east to the west of the lake reaching upto Ithai barrage which in turn is situated at the south-western corner of this lake. This hill range is a combined name of Lamelching, Sarikchingol, Munushoi (Munshoi) and Mondum etc. Mondum area is popular for "Mondum Mahadeva" where every Sunday and fullmoon day of the month of March, many people come to this place for worship. A small road lies extending on the northern side of the Tokching hill range joining with the Burma-Sugnu Road in the east and with the road of Kumbi in the west.



Hillock in the Pat:

A characteristic feature which makes the lake an extraordinary beauty is the presence of four hillocks in this lake. They are Hapcha (smallest of all the four) lying at the centre, Chingjao (slightly larger than the first) also lying at the centre, Chingkokchingmei (largest of all the four) situated in the western side and Tokching (same size as that of Chingjao) standing in the southern side and very close to the Tokching hill range.

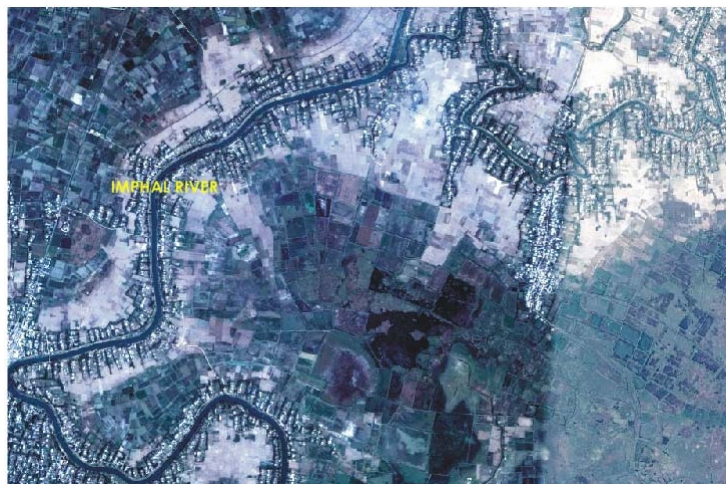
Flora and fauna of the Pat :

As many as 75 plants representing 29 families are reported to have been identified in this lake. Among these, more number of plants are of the families Poaceae, Polygonaceae and Nymphaeaceae, respectively. Some of the plants, are profitably used as source of income by the surrounding local people.

The faunal diversity of the lake, reportedly includes different taxa of aquatic, amphibians as well as terrestrial animals. Among invertebrates, aquatic insects like water beetle, giant water bug, mollusk like snails and fresh water mussel are stated to be very common. Air breathing fishes like *Channa punctatus*, *C. orientalis*, *C. striatus*, *Clarias batrachus*, *Anabas testudineus* and *Monopterus albus* etc; amphibians like *Rana tigrina*; reptiles like Cobra, water cobra, viper, etc along with Python, land tortoise, etc, in rare cases, are reported to have found in the water/marshy shallow areas of the lake and in the hillocks.

The avian fauna like water cock, Indian moorhen, Indian purple moorhen, egrets etc. are reported to have been abundantly found in the months of October and November, and common teal and fantail snipe during October to January. Among the mammals, small carnivores and sea vegers like civet cats, jungle cats, ottars, foxes etc are reported very common. Besides, herbivores like hog deer and wild boar also observed to have shared the same habitats.

Lousi pat



The Lousipat is a small lake in the Thoubal district spreading on both sides of the Indo Burma Road. It falls between 9400'-94015'E longitude and 24030'-25045'N Latitude and at an altitude of 785 m above MSL. Major part of the lake lies extending in the western side of the road. The villages surrounding the lake are Patpal and Tekcham in the north, Irengbal and Mairambam in the south, Langthabal Khunou in the east and Mantak and Tekcham Khunou in the west. Lousi Pat lake is in the far east of Kharung pat connected by a man-made canal called "Maningching Chingtoubi".

The Maning Chingtoubi canal lies in the east-west direction of this lake. Two main rivers namely Langathel and Irum supply water in this lake. The first river arises from the Langol hill which is lying in the east, after passing through the Langathel village flows into the lake. The second one is running from the southern side and is a tributary of Sekmai river and after passing the Irengbal village flows into the lake. A natural canal called Nungourok automatically formed by the running force of rain water lies in the eastern side.

During heavy rainfall, this canal collects a large amount of water from the hill slopes of Konjil whose water is responsible for mass destruction of paddy plants creating a serious problem to the local farmers. About 300-400 hectares lying in the western side and deeper parts of this lake are covered with 2 feet thick Phumdi. During dry season it remains in contact with the underlying muddy part which supplies nutrient for the luxuriant growth of herbs and shrubs growing on its upper part. The water of the lake drains through Maningching Chingtoubi canal .

Ikop Pat :

This lake is also located in Thoubal District at a distance of about 40 km due south-east of Imphal measuring a maximum area of 6.2 sq.km in the rainy season. Ecological assesment reveals that the lake is much threatened from artificial eutrophication attributed to human interference, and encroachment for cultivation and fish farming etc. Altogether 26 plant species have been found growing in the lake. The growth of the important economic species like Trapa natans, Nymphaea sp. Ipomea aquatica, Echinocloa stagnina etc. are in degraded state in these water bodies. Biomass values of the important species varied from 366.4 to 877.8 g/m². Production values of total plants ranged from 0.15 to 4.53 g/m²/day. Physico-chemical analysis of the water samples of the lake showed eutrophic nature.

Source:
 Environment & Ecology
 Office, Government of
 Manipur