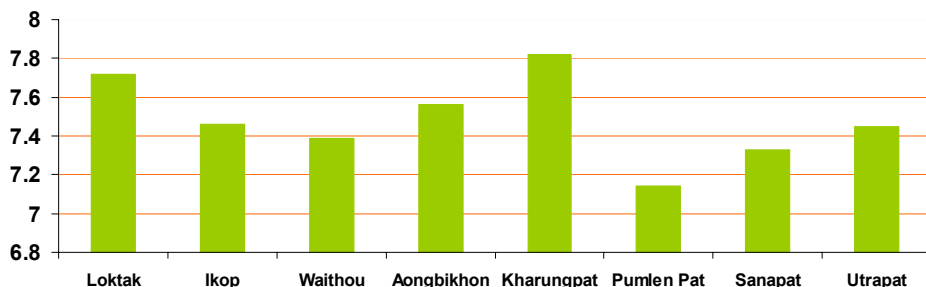


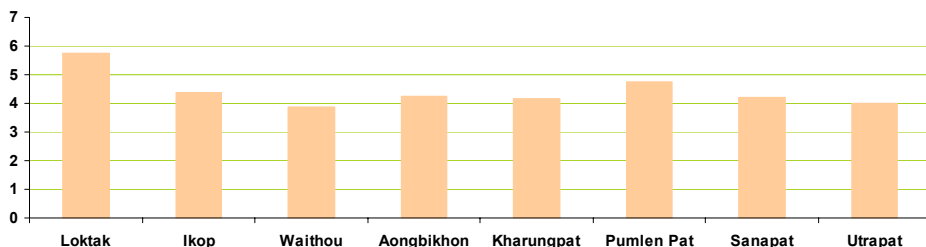
Water Quality Data of Some Important Wetlands of Manipur [Jul-Sept 2010]

Parameters	Loktak	Ikop	Waithou	Aongbikhong	Kharung pat	Pumlen Pat	Sanapat	Utrapat
pH	7.72	7.46	7.39	7.56	7.82	7.14	7.33	7.45
B.O.D. (mg/l)	5.73	4.36	3.89	4.27	4.16	4.76	4.21	4.01
C.O.D. (mg/l)	11.26	9.42	9.86	9.28	8.42	9.67	9.26	8.76
Nitrogen (mg/l)	2.16	2.10	1.87	1.46	1.76	1.42	1.57	1.86
Phosphorous (mg/l)	1.59	1.46	1.52	1.26	1.39	1.46	1.56	1.17
Potassium (mg/l)	4.00	4.00	3.00	3.00	3.00	3.00	4.00	3.00
Total Coliform/100ml	970	840	810	860	840	790	780	740
Faecal Coliform	540	410	490	420	420	470	420	410

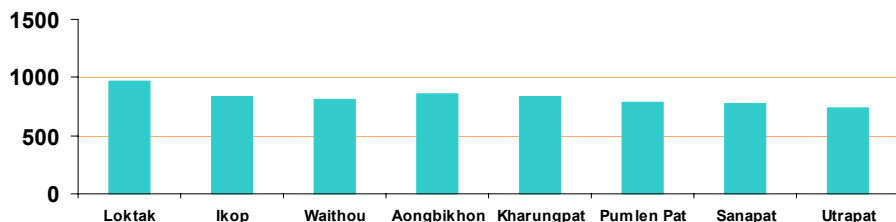
pH variation of Wetlands during Jul-Sept 2010



B.O.D of Wetlands during Jul-Sept 2010



Total Coliform of Wetlands during Jul-Sept 2010



Source: Environment Monitoring, Research & Development Laboratory,
Environment & Ecology Office, Govt. of Manipur